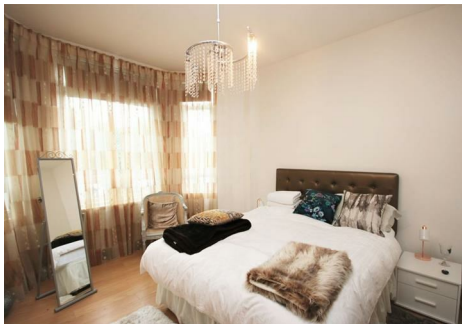


est 1979

Jeremy
Leaf & Co.



Dollis Park, Finchley

£2,200 Per Month

- Available early August
- Private Garden
- Reception
- Part Furnished
- Kitchen
- Two Bathrooms
- Two Double Bedrooms

863 High Road, London, N12 8PT
020 8446 4295

property@jeremyleaf.co.uk
<https://www.jeremyleaf.co.uk/>

Dollis Park, Finchley, N3 1HJ

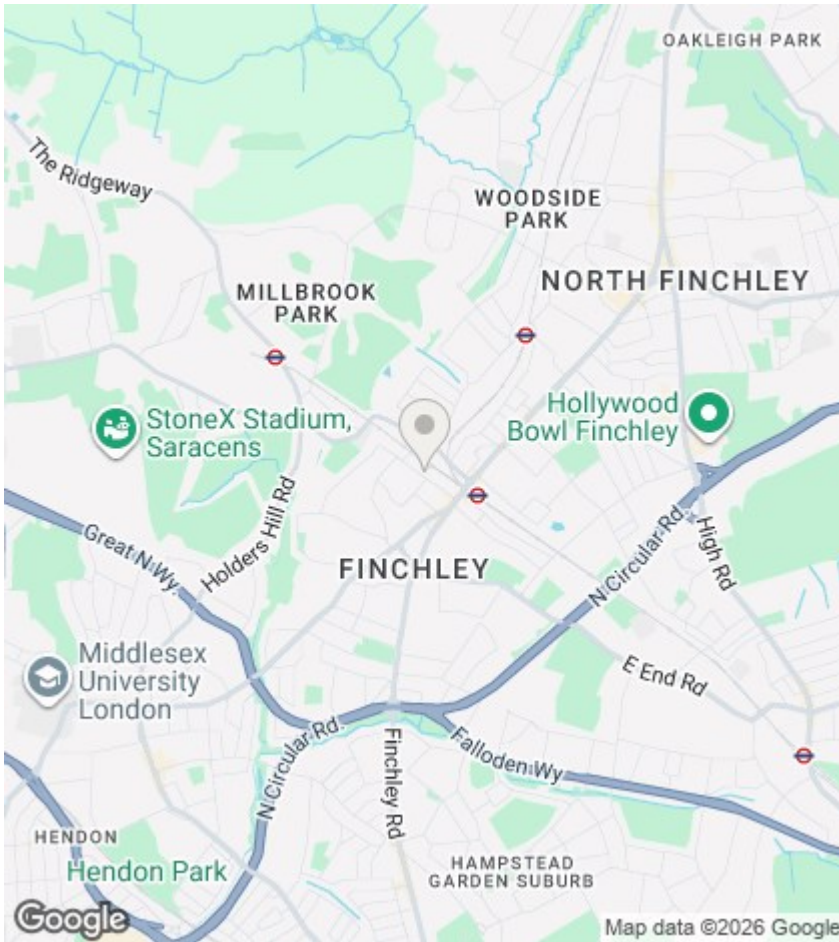
A two double bedroom ground floor conversion flat, located within minutes walk of Finchley Central Station and local shops. Benefiting from two double bedrooms, 2 bathrooms, a private garden and modern fitted kitchen. This property is available from 5th August 2026 and is offered part-furnished.



Council Tax Band: D







Directions

Viewings

Viewings by arrangement only. Call 020 8446 4295 to make an appointment.

EPC Rating:

Energy Efficiency Rating		
	Current	Potential
Very energy efficient - lower running costs		
(92 plus) A		
(81-91) B		
(69-80) C		
(55-68) D		
(39-54) E		
(21-38) F		
(1-20) G		
Not energy efficient - higher running costs		
England & Wales	EU Directive 2002/91/EC 	